



THE UNIQUE HIGH SPEED SORTING EQUIPMENT

POWERBALL SORTER

CREATE COMPETITIVENESS FOR YOUR LOGISTICS SYSTEM



2016 V1.0

Damon
Damon Simplifies Logistics

PRODUCT INTRODUCTION

Powerball Sorters use a unique, dynamic powerball construction. The new type of timing belt driven cone gear, belt driven powerball and modular design concept enable the powerball sorter to perform single direction and bidirectional multi-angle sorting. It improves the efficiency and reliability of sorting and is adaptable to a variety of conveyed goods. The powerball sorter is quick to install and easy to maintain thereby improving the lifespan of the equipment. It is far in advance of similar products in domestic and overseas markets in terms of performance and capacity.



Features

- Item package types:
Suitable for different shapes and dimensions, especially suitable for the soft package sorting.
- Belt twisting does not occur due to the use of a unique tapered roller drive.
- The round shaped powerball handles items gently and without damage.
- CE certified, high reliability, extremely low maintenance costs.
- Can be used for goods diverting, merging, centring and reversing.
- Quick and easy replacement due to modular design.
- Uses high quality European motor and gear reducer.

PBS-POWERBALL SORTING MODULE

PLC connecting form:

The PBS allows the programmer to control the swivel direction of each row of the Powerballs depending on the item size, sorting angle and transport speed. Preference settings are easily adjustable to control the swivel spacing. Flexible programming ensures the highest sorting efficiency and implementation of the design.

PBS powerball sorter working environment

- Ambient temperature: $-5^{\circ}\text{C} \sim 45^{\circ}\text{C}$
- Relative humidity: $\leq 85\%$ (No condensation)
- Power Supply: Three phase five-wire system, 380V, 50HZ
- Security protection ground connection resistance $\leq 4\ \Omega$
- Voltage change rate: AC $380 \pm 10\%$
- Frequency: $50\text{Hz} \pm 1\%$
- Ground connection: AC power supply ground resistance $\leq 4\ \Omega$

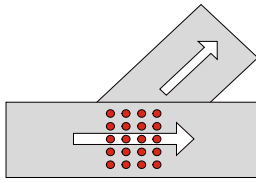
General specifications: *A standard module including 2 row PBS

Type	450	650	850
Size (LxWxH)	715x570x319mm (height including moter)	935x770x319mm (height including motor)	1155x970x319mm (height including motor)
PBS Arrangement	4	6	8
Standard Modular Quantity	2	3	4
Sorting Angle	30°, 45°		
Sorting Direction	Single side sorting and dual sided sorting		
Custom Design	Custom design to increase the number of modules to suit the required length		
Speed(m/min)	30-90		
Maximum Capacity	5000pcs/hour		
Power	0.37kW		0.55kW
Operating Pressure	0.4~0.6MPA		

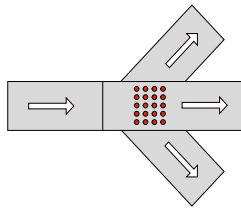
Function diagrams:

Divert

Single direction diverting diagram

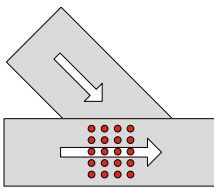


Two-way diverting

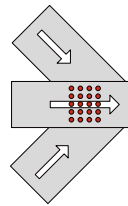


Merge

Single direction merge



Two-way merge



Parameters:

- Suitable for goods in size: min 210x140mm, max 600x400mm
- Suitable for single piece in weight: less than 35kg
- Suitable for items packaged in cartons, totes

Product centring



PBS Powerball sorter application projects

PBS Powerball Sorter has been widely used in various projects including JD Asia NO.1 (Shanghai), Zhengzhou Tobacco factory, Ningbo Tobacco, Tianjing VIP and Suzhou IRG.

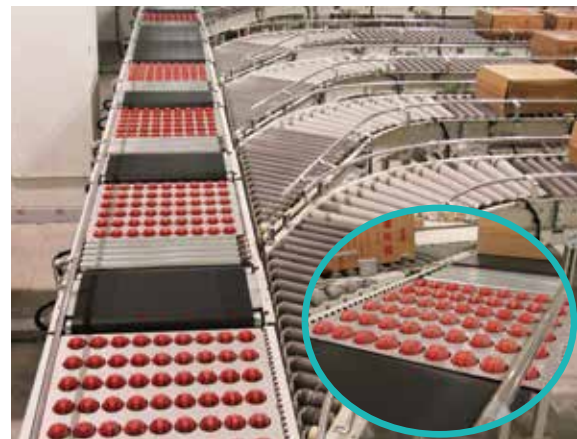


PBS domestic installations

E-commerce logistics centre



Tobacco industry



PBS overseas cases introduction

Philip Morris



British E-commerce logistics centre





Damon, a listed company in Beijing Stock Exchange (stock code: 830805 Damon Science and Technology), is a leading intelligent logistics system & equipment provider in China. Damon focuses on intelligent logistics conveying and sorting system, including product research and development, manufacturing and project services. Damon served the e-commerce, express, clothing, medicine, manufacturing and other customers in various fields, improved the competitiveness of their logistics system, which always received wide acclaim.

www.damon-group.com

